



Horicon Marsh International Education Center



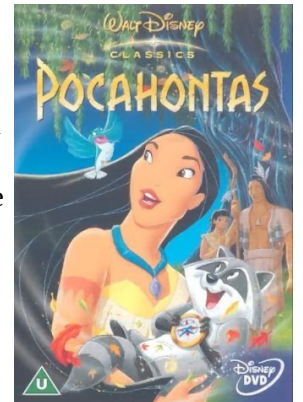
November 2012

Movies at the Marsh

On **Saturday, November 3rd**, at 6:30 p.m., Movies at the Marsh will be showing the movie, **"We Bought a Zoo"**. Benjamin (Matt Damon) has lost his wife. In a bid to start his life over, he purchases a large house that has a zoo. This is welcome news for his daughter, but his son is not happy about it. The zoo is in need of renovation and Benjamin sets about the work with the head keeper, Kelly, and the rest of the zoo staff. Soon the zoo runs into financial trouble. The staff must get the zoo back to its former glory, pass a zoo inspection, and get it back open to the public. Will they succeed? Come watch to find out!



On **Saturday, November 17th**, at 6:30 p.m. Movies at the Marsh will be showing Disney's epic story of **"Pocahontas"**. She is the daughter of a Native American tribe chief. She falls in love with Captain John Smith and together they attempt to prevent an all out war between the English explorers and Native American tribe while saving their love for each other. Enjoy the classic story of a people closely tied to nature and their fight to save nature from those who wish to destroy it.



Don't miss this opportunity to see your favorite movies on the big screen. All movies are family friendly (rated G or PG), free and open to the public. Refreshments are available. The International Education Center is located between the towns of Horicon and Mayville.

"Bill Koelpin" Art Exhibit



Horicon Marsh International Education Center is excited to welcome a nature art exhibit by Bill Koelpin. An opening reception will be held on **Saturday, November 10th from 11:00am-3:00pm** at the Horicon Marsh Education Center. All are welcome!

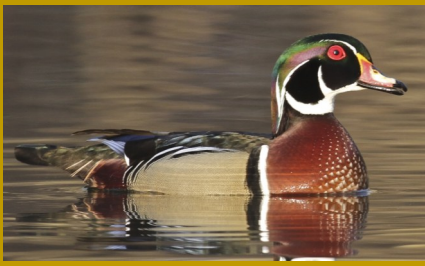
Bill Koelpin, Jr. was born in Milwaukee, Wisconsin. As a youngster at the knee of his mentor and father, William Koelpin, Sr., Bill was exposed to the powerful combination of nature and art early on and has remained fascinated with the partnership.

Drawing upon the inspiration of nature around him, he encapsulates the beauty of wildlife and complementary scenery in paintings and woodcarvings. A versatile artist, in his paintings he might capture a circumspect Whitetail at dusk as easily as he depicts an idle tug boat leisurely bobbing upon a breaking wave, a mountain man in repose or a multihued, floral view from a front porch. If it has a surface, he has been known to paint it, including paddles, saws and benches. Many of these items are much sought after at sporting shows or grace the walls of businesses and restaurants. In recent years, ceiling and wall murals also bear his signature in old Victorian homes and local Wisconsin barns.

The Horicon Marsh International Education Center is located on Hwy. 28 between the cities of Horicon and Mayville. The education center is open from 9:00am-4:00pm on weekdays and 10:00am-4:00pm on weekends through November 30. Starting December 1st, weekend hours are 1:00pm-4:00pm. Bill's art display can be found in the lower level of the education center. The reception is free and open to the public. Please contact Jennifer Wirth for more information at 920-387-7889.



Horicon Marsh International Education Center



Horicon Marsh Bird Club

Saturday, November 3rd, at 8:00am join the Bird Club at the Horicon Marsh Education Center for a field trip on Waterfowl of the Horicon Marsh.

Thursday, November 15th, at 7:00pm Bill Mueller will give a presentation on "Chimney Swifts". Visit [here](#) for more information.



The Flyway Gift Shop has some new fall items available! Check out the coffee mugs, long-sleeved T-shirts, and pocket naturalist guides. Also available is the newly released book "Horicon Marsh History" by local writer Don Miescke.

Thank you for your support of the environmental and wildlife education programs at Horicon Marsh International Education Center. Your financial gifts, memberships, and volunteerism are what keep us going.
www.horiconmarsh.org

Upcoming Events

- November 3** Movies at the Marsh 6:30-8:30pm, "We Bought a Zoo".
- November 5-
January 3** Art Exhibit Daily. Bill Koelpin- Wildlife Painter
- November 7** Lecture Series 7:00pm, "Wisconsin's Invasive Species-Together We Can Slow the Spread!" presented by DNR educator, Chrystal Schreck.
- November 15** Annual Friends Meeting and Dinner 5-6:30pm
- November 17** Movies at the Marsh 6:30-8:30pm, "Pocahontas".
- December 1** Movies at the Marsh 6:30-8:30pm, "The Missing Lynx".



Alien Invaders Lecture Series

On Wednesday November 7th, at 7:00 p.m., the Horicon Marsh International Education Center welcomes DNR Invasive Species Educator, Chrystal Schreck. She will be giving a presentation entitled, "Wisconsin's Invasive Species - Together We Can Slow the Spread!"

Invasive species threaten our economy and environment. Wisconsin has enacted state-wide, cross-taxa regulations to address these threats and slow the spread of invasive species more effectively. With the broad goals of prevention, education, and consistency, Wisconsin's Invasive Species Rule classifies invasives as prohibited or restricted and establishes clear regulations. This session covers the purpose, terminology and mechanisms of Wisconsin's Invasive Species Rule, and describes how the rule applies to landowners, gardeners and anyone who recreates outside. Learn how you can help slow the spread of invasive species on private and state lands!

All presentations are free and open to the public. The Horicon Marsh International Education Center is located between the cities of Horicon and Mayville on Highway 28. The presentation will be in the auditorium near the lower entrance. For a detailed list of all our special events please visit the Friends website at www.horiconmarsh.org.

Websites of Interest!

- **NEW!!** Many past presentations, Horicon Marsh Bird Club speakers and Rock River Archeological Society speakers have been recorded for webcasts and can be viewed at [here](#).
- Check out the Friends group on [Facebook](#) or at www.horiconmarsh.org! Just search for "Horicon Marsh."

If you would like more information, please e-mail Liz Herzmann at elizabeth.herzmann@wisconsin.gov

Horicon Marsh International Education Center, N7725 Highway 28, Horicon, WI 53032